

EasyClamp



EasyClamp is a minimalist yet remarkably effective modular horizontal cable management system that is a perfect companion for the OE Electrics range of under desk power modules.

The key strength of EasyClamp is the simplicity with which it achieves the management of power and data below the desk top and is perfect for mounting power modules under table top access ports.

EasyClamp is a great solution for open backed desks and small meeting tables where a conventional suspended cable tray would be visually intrusive.

EasyClamp can be combined with our Pathfinder umbilical for a complete floor to desk top cable management solution.

UNIQUE SELLING POINTS:

- Low profile mounting rail
- Easy to reconfigure
- Accepts power modules & cable clips
- Scalable for longer lengths



Aluminium Mounting rail

The core component of EasyClamp is a solid aluminium mounting rail to which plastic mounting clips for power modules, laptop power supplies and cables can be attached. The aluminium mounting rail is available in 15.75" (400mm) modular sections or as a fixed 39" (1000mm) rail.

Mounting clips

EasyClamp mounting clips for Power modules and power/data cables are securely attached and easily movable simply by locating and clipping into place.

Configuration

Custom EasyClamp kits can be created from the range of modular components, or alternatively the 'EasyClamp 1000 kit' is available which contains the standard parts required for a typical under desk top installation.

Pathfinder/Cable-Snake® Integration

EasyClamp can be combined with our Pathfinder and Cable-Snake® vertical cable management products to achieve a complete floor box to desk top cable management solution.



Fig. A



Fig. B

Our Pathfinder umbilical can be integrated with the EasyClamp for floor to desktop cable routing - Using either the Pathfinder's standard mounting (fig. A) or by attaching the Pathfinder directly to EasyClamp (fig. B)

The EasyClamp 1000 kit comprises:

- 39" (1000mm) mounting rail
- 3 x cable clips
- 2 x 90° Powerunit clips
- 4 x wood screws



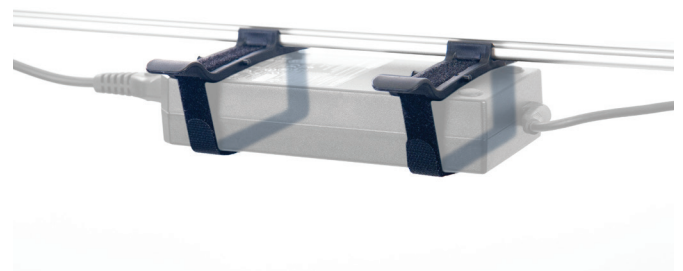
EasyClamp 1000 Modular rail system showing end caps and connectors with mounting screws



EasyClamp 400 couplers and end caps for extending and mounting the EasyClamp system



EasyClamp 400 rail with an OE POWERUNIT using two 90° mounting clips



Optional "Velcro" loop mounts for power module attachment

EasyClamp

Technical

Materials:

Rail: Anodized aluminium
End caps: Grey Polycarbonate
Connectors: Grey Polycarbonate

Mounting:

#4 x 20mm wood screws (included)

Length Combinations

- 15.75" (400mm): 1 rail 14.96" (380mm) + 2 end caps
- 31" (790mm): 2 rails 14.96" (380mm) + 1 coupler + 2 end caps
- 39" (1000mm) rail
- 46.45" (1180mm): 3 rails 14.96" (380mm) + 2 couplers + 2 end caps
- 61.81" (1570mm): 4 rails 14.96" (380mm) + 3 couplers + 2 end caps

Power module compatibility

Easy Clamp rails and power clips (60° & 90°) are compatible with the following OE products:

- Powerunit
- Powerbox

EasyClamp Clips

Types: Power, Cable, Universal Velcro

Materials: Black Nylon

Mounting: Clip onto rails (no tool needed)

Power clip Options

90° (vertical) and 60° (angled).

Cable clip capacity

4 typical power/data/AV cables

Universal Velcro clip

(1.97"/50mm diameter MAX)

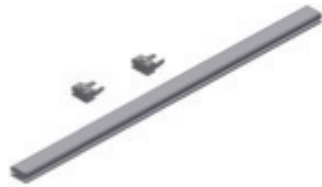
Suitable for mounting:

- Non-OE power modules
- IT power supplies

Easy Clamp Modular Components



EC5001 EasyClamp 1000 kit: 39" (1000mm) mounting rail, 3 x cable clips, 2 x 90° Powerunit/Powerbar clips, 4 x wood screws



EC5002 EasyClamp profile (400mm)



EC5003 EasyClamp profile (1000mm)



EC5004 EasyClamp 30x60 90° Powerunit/Powerbar clip



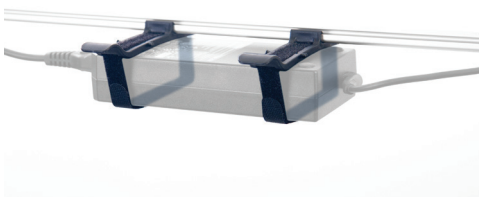
EC5005 EasyClamp 11.81" x 23.62" (30x60mm) 60° Powerunit/Powerbar clip



EC5006 EasyClamp 1.73"x2.40" (44x61mm) 90° Powerbox clip



EC5007 EasyClamp 44x61 60° Powerbox clip



EC5008 QL EasyClamp Velcro Clip



EC5009 EasyClamp Cable Clip



EC5010 EasyClamp coupler (for joining 15.75" (400mm) rails)

